

## **CHAPTER-6**

### **RESPONSE PLAN**

During the disaster period the situation needs an immediate response but the emergency situation has already created the chaotic conditions on the site of incidence. The situation warrants the time sensitive actions to save life and property , reduce hardships and sufferings and restore the essential life support and community system, to mitigate further damage or loss and provide the foundation for further recover and reconstruction. Effective response planning requires realistic identification of the likely response functions, assignment of specific tasks to the individual response departments/agencies, identification of the equipments, supplies and personnel required for performing the assigned task.

#### **6.1 ) OPERATIONAL DIRECTION AND COORDINATION**

Deputy Commissioner Shimla being the Chairman of DDMA shall direct and coordinate all responses in the district to manage the disaster . Immediate upon receiving the information of the Disaster he will assess the magnitude of the Disaster and after such assessment if its magnitude and extent is limited to the jurisdiction of the Subdivision and is manageable at the Sub division level then he will direct the SDM concerned to coordinate all the responses in the area with the responding teams and will monitor the measures being taken at district level and guide and direct the SDM to take further measures if necessary.

#### **6.2) EMERGENCY WARNING AND DISSEMINATION**

On receipt of information either from the SEOC or from the other nodal department regarding any warning of the ensuing natural Hazard , DDMA shall issue alerts to the general masses through the SDMS and BDOs along with press release through the public Information Department and alert all the nodal departments at the district level to take preventing measures immediately and be ready for providing the Emergency Support Functions (ESFS).

Meanwhile the meeting of the DDMA shall be convened and the stock of the situation will be taken and report in this regard shall be forwarded to the SDMA for information.

#### **6.3) DISASTER WITHOUT EARLY WARNINGS**

In such cases where the disaster occurs without early warnings ,DDMA upon the receipt of first report/information shall assess the stock of the situation and in such scenario where the disaster has caused the damages which is beyond the capabilities/ capacity of the local authority/SDM level to cope up with immediately it will be declared as district level Disaster and such Information will be sent to the SEOC. Immediately thereafter the information shall be disseminated to the Nodal departments at the district level and meeting of the DDMA will be convened and the District Emergency Operation Centre will be activated.

### 6.4) RAPID DAMAGE ASSESSMENT AND REPORTING

A team headed by Thesildar/Naib Tehsildar of the area concerned and officers from PWD ,IPH, HPSEB, not below the rank of SDO and Health department BMO along with SHO and Fire officer if available locally ,will immediately rush to the spot and first hand assessment of damages and loss so done shall be forwarded to the SDM concerned for further dissemination to the DEOC. Thereafter this team will assess daily the situation and send its report on the proforma annexed as Annexure-VI. The organization of rapid assessment damage team will be as follow:-



Figure 6.4: RAPID DAMAGES ASSESSMENT TEAM

The DDMA shall review each such report daily and send report to SDMA on daily basis.

### 6.5) INCIDENT COMMAND SYSTEM

As per the report received from the Rapid Damage Assessment Team , DEOC will be activated and the representative from all the nodal departments in the district will send their representative in the DEOC. The Deputy Commissioner shall assume the charge of the Incident Commander at the DEOC level. Immediately the member of the DDMA will prepare the Incident Action Plan and direct the respective departments to execute the plan on the incident site.

### 6.6) ESTABLISHMENT OF INCIDENT COMMAND POST

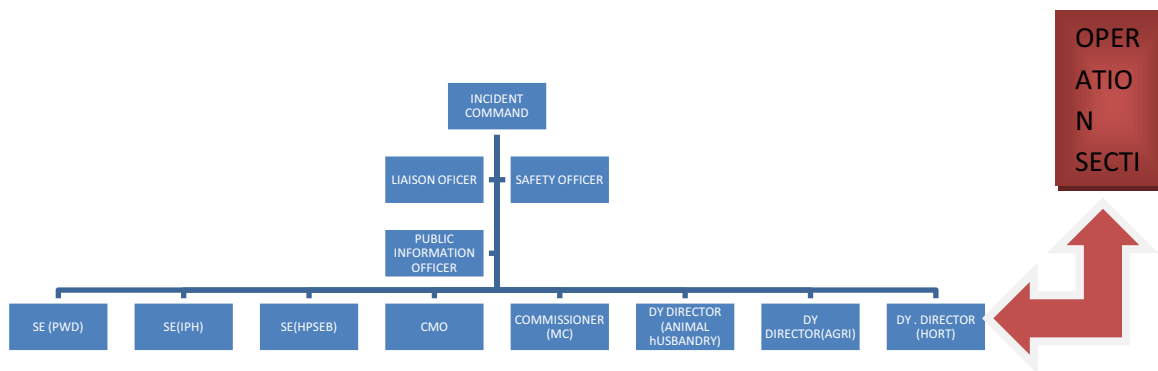
To execute the Incident Action Plan , the Incident Command Post shall be established on site to execute the operation under unified command system when the no agencies involved in the operations are more than one department/agency. Every team will operate under the field incident command who will SDM for revenue, BDO for Rural Development, the Xen of the concerned department if departments

involved are PWD, IPH, HPSEB, and District Fire Officer for fire Department, Commandant Home Guards , Dy. Sp for police department, RM for HRTC etc These field incident commands will monitor the work of all their respective teams and SDM will also work as coordinating command between different departments /agencies involved.

**6.7) COMPOSITION OF VARIOUS INCIDENT RESPONSE TEAMS**

To manage the disaster in a effective way every department will constitute Incident Response Teams in the district consisting of 3-7 person along with machinery/equipments which will operate under the supervisory officers who will be designated as leader who will be reporting to the officer who will be designated as supervisor who will be controlling 3-7 such types of teams ,who will further report to the officer who will be looking after 3-7 such types of divisions finally to the section chief who will be Xen of the departments for PWD,IPH, HPSEB departments .

**6.8) ORGANISATION OF DEOC IN SUCH DISASTER**



**OTHER SECTIONS OF DEOC**

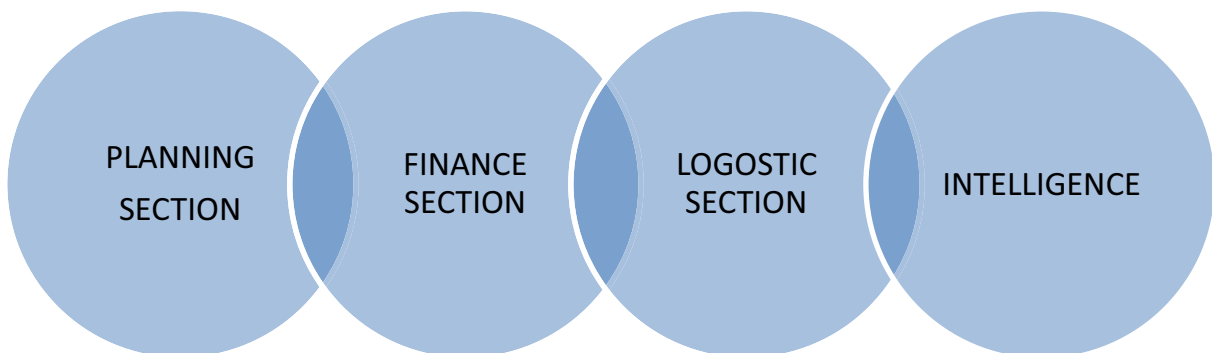


Figure 6.8 : OPERATION OF DEOC DURING DISASTER

**6.9) ROLES AND RESPONSIBILITIES OF NODAL DEPARTMENTS AND AGENCIES AT DISTRICT LEVEL**

**Table 6.9**

<b>NAME OF THE DEPARTMENT</b>	<b>ROLES AND RESPONSIBILTY ASSIGNED</b>
<b>REVENUE</b>	IMMEDIATE ASSESSMENT OF LOSS, DISBURSEMENT OF RELIEF, COORDINATION BETWEEN DIFFERENR DEPARTMENTS FOR MANAGEMENT OF DISASTER, COMPILATION OF DATA ,REPORTS AND FORWARDING THE SAME TO DDMA .
<b>PUBLIC WORKS DEPARTMENT</b>	PRIMARILY ENSTRUSTED TO MAINTAIN THE INFRASTRUCE VIZ ROADS , BRIDGES, CRITICAL BUILDINGS, IDENTIFICATION OF ALTERNATE ROUTES AND DEMOLITION OF DANGEROUS BUILDINGS, HAZARDS RESISTANT FEATURES DURING CONSTRUCTION AND ALL THE BUILDING LAWS.
<b>TOWN AND COUNTRY PLANNING</b>	ENSURING PROPER LAND USE IN THE DISTRICT,HAZARDS WISE ZONATION OF THE DISTRICT AND ENSURING THE IMPLEMENTATION OF THE BUILDING LAWS.
<b>URBAN DEVELOPMENT</b>	ENSURE THE ADOPTION OF BUILDING BYE LAWS WHICH COORESponds TO THE EARTQUAKE RESISTANT STRUCTURES BY THE LOCAL BODY, ZONATION OF THE LOCAL URBAN AREAS BY BTHE TOWNA AND COUNTRY DEPARTMENTA S PER THE HAZARD AND STRICT IMPLEMENTATION OF THE CONSTRUCTION PLANS AND DOVETAILING THE HAZARDS RESISTANT TECHNOLOGY IN THEIR PLANS.
<b>HIMUDA</b>	ENSHRINED WITH THE RSPONSIBILITY OF RECONSTRUCTION OF THE HOUSES IN THE DISASTER AFFECTED AREAS
<b>EDUCATION</b>	PREPARE THE CURRICULUM FOR DISASTER MANAGEMENT AND CONDUCT TRAINING PROGRAMMES FOR THE TEACHERS AND STUDENTS REGARDING HAZARDS RESISTANT TECHNOLOGY , MOCK DRILLS ETC.
<b>IRRIGATION AND PUBLIC HEALTH</b>	PRIMARY AGENCY FOR FLOODS,WATER SUPPLY, DROUGHT AND ISUE OF ARNINGS FOR FLOODS,ARRANGEMNTS OF PUMPS ETC FOR DELOGGED WATER ETC. REPAIR AND RESTORATION OE WATER SUPPLY IN THE DISASTER AFFECTED AREAS IMMEDIATELY.

<b>FOREST</b>	PRIMARY AGENCY FOR MANAGEMENT OF FOREST FIRES ITS PREVENTION, MITIGATION AND DURING RECONSTRUCTION PHASE RESPONSIBLE FOR SUSTAINING THE ENVIRONMENT.
<b>HEALTH</b>	PRIMARY AGENCY FOR BIOLOGICAL AND EPIDEMIC ,DISASTERS, FIRST AND SECONDARY MEDICAL AIDS TO BE GIVEN ON THE SPOT AND THE HEALTH CENTRES,PREVENTIVE MEASURES FOR WATER BORNE DISEASES ETC.
<b>INFORMATION AND PUBLIC REACTION</b>	ALL AWARENESS PROGRAMMES , DISASTER WARNINGS, AND DURING DISASTER PRESS RELEASES STC AND MEDIA MANAGEMENT.
<b>RURAL DEVELOPMENT AND PANCHAYATI RAJ</b>	PRIMARY AGENCY TO DEVELOP THE VULNERABILITY PROJECTS WITH THE POVERTY ALLEVIATION PROGRAMMES TO CONSTRUCT THE RURAL AREAS HAZARD RESISTANT TRAINING TO THE PANCHAYATI RAJ INSTITUTIONS AND SENSITISATION OF THE MASSES AT THE VILLAGE LEVEL ABOUT THE DISASTER AND TECHNOLOGIES AVAILABLE FOR HOUSE BUILDINGS ETC.
<b>AGRICULTURE</b>	HAILSTORMS, DROUGHTS,PEST ATTACKSAND CONSERVATION OF ORGANIC FARMING TO SUSTAIN THE ENVIRONMENTFROM PESTICIDE USE ETC.
<b>HORTICULTURE</b>	HAILSTORM ,DROUGHT ,PEST ATTACK IN CASE OF HORTICULTURE PRODUCE.
<b>ANIMAL HUSBANDRY</b>	ANIMAL EPIDEMIC, FODDER ASSESSMENT, DURING DISASTER ANIMAL RESCUE AND RELIEF , FIRST AID AND MEDICAL TREATMENT ETC.
<b>POLICE</b>	MAINTAIN LAW AND ORDER, RESCUE, PROPER RECORDS OF THE HUMAN LOSSES ,RESTORATION OF TRAFFIC , CONTROL OF MASSES ETC.
<b>HOME GUARDS</b>	RESCUE TEAMS, SEARCH , ETC
<b>FIRE</b>	RESCUE , VILLAGE FIRES EXTINGUISHMENT, TRAINING OF VILLAGERS

## 6.10 ) EMERGENCY SUPPORT FUNCTIONS ASSIGNED TO DIFFERENT DEPARTMENT IN THE DISTRICT

During the disaster the emergency functions assigned to the different departments in the district shall be as follow:-

**Table 6.10**

EMERGENCY SUPPORT FUNCTION	RESPONSIBILITY	DEPARTMENT
<b>Communications</b>	Will ensure the provision of state wide telecommunication, support to the state, and district in response efforts	BSNL. HOMEDEPARTMENT
<b>Public health and sanitation</b>	Provide coordinated assistance to supplement state and local resources in response to public health and medical care needs following significance natural or man made disaster. Resources will be furnished when the state and district resource are overwhelmed and medical and public health assistance is requested from the State government.	HEALTH AND FAMILY WELFARE, URBAN , RURAL DEPARTMENT
<b>Power</b>	To facilitate restoration of energy systems after a natural Disaster	HPSEB
<b>Transport</b>	Provide coordination of state transport support and local government. Coordinate the use of transportation resources to support the need of emergency support forces requiring transportation capacity to perform their emergency response, recovery and assistance missions. It will works with outside agencies for transportation, coordination and preparedness resource request for assistance when needed.	TRANSPORT
<b>Search and Rescue</b>	Provide specialized life saving assistance to state and local authorities. In the event of a major disaster or emergency. Its operational activities include locating, extricating and providing on site medical treatment to victims trapped in collapsed Structures.	FIRE, HOME GUARDS, POLICE
<b>Donations</b>	Donation management is necessary to control the flow of goods and services into a disaster area. if trucks, trains, and planes are allowed into the disaster area to draw their donations, they can easily interfere with other ongoing disaster response operation. Uncontrolled donations can also put undue burden on disaster response operations as they required scarce response resources. Above all it is necessary to manage the flow of donated goods to be sure that the needs of disaster victims are being met as effectively as possible.	REVENUE

	Expedite delivery of voluntary goods and services to support relief effort in a coordinated manner.	
<b>Public works and Engineering</b>	Provides technical advice and evaluation engineering services, contracting for construction management and inspection, contracting for emergency repair of water, and waste water treatment facilities, potable water, emergency power, real state support to assist the states in meeting the goals related to life sustaining actions, damage mitigation and recovery activities following a major disaster. Provide PW and engineering support to assist need related to life saving or protecting prior to, during and immediately following an event perform immediate damage assessment of the infrastructure.	PWD
<b>Information and Planning</b>	To collect, process and disseminate information about an actual or potential situation. To facilitate the overall activities of all responders in providing assistance to an effected area. Should maintain a data base of all related disaster related information inform of GIS that will allow easy access and retrieval of information during a disaster.	REVENUE
<b>Relief supplies</b>	Coordinate activities with emergency provisions of temporary shelters, emergency mass feeding, and bulk distribution of coordinated relief supplies for victims of disasters, In some instances services may also be provided to disaster workers and logistical and recovery efforts, shelter, food and emergency first aid following a disaster, Operate disaster well fare information, to collect receive and report the status of victims and assist family reunification, and accrdinate bulk distribution of emergency relief supplies.	REVENUE
<b>Food</b>	To identify the basic needs of food in the aftermath of a disaster or emergency. To obtain appropriate supplies and transporting such supplies to the disasters area and identify secure, and arrange to transport food assistance to the affected areas and authorize food stamp assistance following a major disaster of emergency requiring state response.	FOOD AND SUPPLY
<b>Drinking water</b>	To provide a minimum quantity of clean drinking water and to reduce the spread of disease through water during disaster times allow to people to perform daily task.	IPH
<b>Shelter</b>	To meet the physical needs of individuals, families and Communities for safe. Secure and comfortable living space.	PWD

## RESPONSE PLAN

---

	To meet primary social needs incorporating self management in the process.	
<b>Media</b>	To provide and collect reliable information on the status of disaster and district victims for effective coordination of relief work at state level.	INFORMATION AND PUBLIC RELATION
<b>Help lines</b>	To collect, process and disseminate about of the welfare of citizens of the affected area and managing the tremendous flow of information. The speed with which information is received with which it changes requires that assistance be developed to ensure accuracy as well as easy access. The help lines will be responsible for providing, directing, and coordinating logistical resource operations .	DISTRICT ADMINISTRATION, REVENUE

### **6.11) DISPOSAL OF DEAD BODIES**

District administration will coordinate to arrange the mass cremation/burial of the dead bodies with support of police and forest department after observing all codal formalities and maintain the video recording of such unclaimed dead body and other after properly handing over the same to his kith or kin.

### **6.12 ) DISPOSAL OF CARCASSES**

Department of animal husbandry in association with the local administration shall be responsible for disposal of the carcasses in case of mass destruction.